



SPRING / SUMMER 2016

FLEXFIT®**YUPOONG**

6195P	FLEXFIT PINSTRIPE	15
6196	FLEXFIT GLEN CHECK	40
6197	FLEXFIT TARTAN PLAID	43
6277	FLEXFIT WOOLY COMBED	8
6277CA	CARBON FLEXFIT	57
6277FM	FINE MELANGE FLEXFIT	29
6277HM	HERINGBONE MELANGE FLEXFIT	58
6277LE	LEATHER IMITATION PEAK FLEXFIT	54
6277PS	PLAIN SPAN FLEXFIT	30
6277Q	DIAMOND QUILTED FLEXFIT	48
6277SM	STRIPES MELANGE FLEXFIT	61
6277TK	TWILL KNIT FLEXFIT	33
6511	FLEXFIT MESH TRUCKER	19
6511T	FLEXFIT MESH TRUCKER 2-TONE	20
6533	FLEXFIT TACTEL MESH	23
6560	FLEXFIT 5 PANEL	16
6580W	FLEXFIT PERFORMANCE	36
6588	FLEXFIT BAMBOO	47
6595	FLEXFIT PERFORMANCE	39
6777	FLEXFIT ATHLETIC MESH	24
6778	FLEXFIT DOUBLE JERSEY	11
6778T	FLEXFIT DOUBLE JERSEY 2-TONE	51
9180	FLEXFIT DRIVER	44
9277	FLEXFIT SQUARE CHECK CAP	12



180	FLEXFIT DELTA	67
-----	---------------	----

210 FITTED**YUPOONG**

6210	PREMIUM 210 FITTED	70
6210T	PREMIUM 210 FITTED 2-TONE	73

THE CLASSICS**YUPOONG**

6005FF	FOAM TRUCKER	170
6005FW	FOAM TRUCKER WITH WHITE FRONT	173
6006	CLASSIC TRUCKER	84
6006T	CLASSIC TRUCKER 2-TONE	83
6006W	CLASSIC TRUCKER	80
6007	CLASSIC 5 PANEL SNAPBACK	91
6007RS	SPECIAL RIPSTOP SNAPBACK	96
6007T	CLASSIC 5 PANEL SNAPBACK	92
6089AZ	AZTEC SNAPBACK	116
6089BD	BANDANA SNAPBACK	119
6089BT	BOOTS SUEDE SNAPBACK	135
6089CA	CARBON SNAPBACK	100
6089CH	CHAMBRAY-SUEDE SNAPBACK	120
6089CM	CAMOUFLAGE SNAPBACK	95
6089CO	CORK SNAPBACK	108
6089F	FLORAL SNAPBACK	111
6089FL	FULL LEATHER IMITATION SNAPBACK	107
6089FP	CHECKED FLANELL PEAK SNAPBACK	136
6089GV	GEOMETRIC VISOR SNAPBACK	144
6089HE	HORUS EYE SNAPBACK	139
6089HW	HAWAIIAN SNAPBACK	124
6089LH	LEATHER SNAPBACK	127
6089LJ	FALLEN LINES SNAPBACK	147
6089M	CLASSIC SNAPBACK	76
6089ML	MELANGE 2-TONE SNAPBACK	140
6089MT	CLASSIC SNAPBACK 2-TONE	79
6089MV	MESH VISOR SNAPBACK	148
6089MX	MIXED UP SNAPBACK	128
6089OP	OIL PAINT SNAPBACK	165
6089PR	ANIMAL SNAPBACK	131
6089PV	PAINTED VISOR SNAPBACK	151
6089Q	DIAMOND QUILTED SNAPBACK	132
6089R	ROSES SNAPBACK	115
6089RC	CHECKED FLANELL SNAPBACK	166
6089RV	REFLECTIVE VISOR SNAPBACK	152
6089SC	STRIPES MELANGE CROWN SNAPBACK	155

THE CLASSICS**YUPOONG**

6089SK	SUN KING SNAPBACK	123
6089SP	SUNSET PEAK SNAPBACK	156
6089SV	STRIPES MELANGE VISOR SNAPBACK	159
6089TT	ANIMAL TONE IN TONE SNAPBACK	112
6245CM	LOW PROFILE COTTON TWILL	169
6363V	BRUSHED COTTON TWILL MID-PROFILE	99
6606	RETRO TRUCKER	87
6606T	RETRO TRUCKER 2-TONE	88
6689M	MELTON WOOL SNAPBACK	160

**YUPOONG**

110	110 FITTED SNAPBACK	178
110AE	ACID EFFECT 110 SNAPBACK	181
110HB	HERINGBONE 110 SNAPBACK	182
110P	110 COOL & DRY MINI PIQUE	185
8110	110 VISOR	177

THE CLASSICS**YUPOONG**

7005	CLASSIC JOCKEY CAP	188
7005R	ROSES JOCKEY CAP	191

BUCKET HAT

5003	FLEXFIT COTTON TWILL BUCKET HAT	194
5003BL	BANDANA LEATHER IMITATION BRIM BUCKET HAT	197
5003FL	FULL LEATHER IMITATION BUCKET HAT	198
5003FP	FLOWER PATTERN BUCKET HAT	201
5003R	ROSES BUCKET HAT	202
5003SK	SUN KING BUCKET HAT	205

BEANIES

1500KC	HEAVYWEIGHT BEANIE	208
1501KC	HEAVYWEIGHT LONG BEANIE	211











Headwear designer and manufacturer in Korea since 1974.

YUPOONG is above all a legend, that of a prestigious company whose products have been used by world leading brands of the 21st century and have been acknowledged as the "EPITOME OF REFINEMENT". It is also the combination of unique craftsmanship and the highest standards of quality which has gained us an impeccable reputation as the leading headwear producer in the world.

We have given birth to 4 unique styles of caps and named these FLEXFIT, 110, 210 FITTED, THE CLASSICS YUPOONG. In the following pages, FLEXFIT EU HUB invites you to discover its new range of caps developed under our own brand names. From Classic styles to the very latest, we are focusing on bridging the art of fashion and develop an emotional connection with the consumers. As part of this programme, we also offer custom designs that can be made using the same design properties. We hope you will join us in experiencing this whole new range of the next generation of headwear.

Flexfit has developed an image which is identified as uniquely amazing, no other cap in the world has been engineered to such precision. With its unique patented characteristics including Permacurve, we've created a comfortable cap that fits any head size but maintains the integrity and classic structure of a fitted cap. This, as you probably can tell, offers the wearer the best of both worlds.

When selecting YUPOONG family products you are making a statement of your passion for quality.

FLEXFIT WOOLY COMBED

ARTICLE NO: 6277

SIZES: YOUTH XS/S S/M L/XL XXL

MATERIAL: 63% POLYESTER, 34% COTTON, 3% ELASTANE



DARK GREY



SILVER



GREY



BLACK



PEPPER GREEN



FRESH GREEN



HAWAIIAN OCEAN



ROYAL



WHITE



MAROON



RED



ORANGE



BROWN



PURPLE



OLIVE



KHAKI



DARK NAVY



CAROLINA BLUE



NAVY



SPRUCE

BLACK/BLACK
NEW

GOLD



PINK



STONE







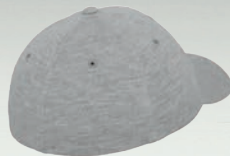
FLEXFIT DOUBLE JERSEY

6778 :ARTICLE NO

S/M L/XL :SIZES

63% POLYESTER, 34% COTTON, 3% ELASTANE :MATERIAL

FLEXFIT



NAVY



BLACK



ROYAL



HEATHER



RED

FLEXFIT SQUARE CHECK CAP

ARTICLE NO: 9277

SIZES: **S/M** **L/XL**

MATERIAL: 58% POLYESTER, 39% COTTON, 3% ELASTANE



WHITE/DARK NAVY



BLACK/WHITE



TURQUOISE/WHITE



DARK GREY/GREY







FLEXFIT PINSTRIPE

6195P :ARTICLE NO

S/M L/XL :SIZES

97% POLYESTER, 3% ELASTANE :MATERIAL

FLEXFIT



DARKGREY/WHITE



BROWN/WHITE



WHITE/BLACK



NAVY/WHITE



BLACK/WHITE

FLEXFIT 5 PANEL

ARTICLE NO: 6560

SIZES: S/M L/XL

MATERIAL: 97% POLYESTER, 3% ELASTANE



WHITE



RED



NAVY



BLACK



KHAKE









FLEXFIT MESH TRUCKER

6511 :ARTICLE NO

S/M OSFA L/XL :SIZES

55% POLYESTER, 43% COTTON, 2% ELASTANE :MATERIAL



ROYAL*



NAVY*



BLACK



WHITE



RED*

* COLOR NOT AVAILABLE IN OSFA

FLEXFIT

FLEXFIT MESH TRUCKER 2-TONE

ARTICLE NO: 6511T

SIZES: S/M OSFA L/XL

MATERIAL: 55% POLYESTER, 43% COTTON, 2% ELASTANE



BLACK/WHITE



NAVY/WHITE*



ROYAL/WHITE*

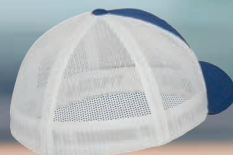


RED/WHITE*



PINK/WHITE*

* COLOR NOT AVAILABLE IN OSFA









FLEXFIT TACTEL MESH

6533 :ARTICLE NO

S/M L/XL :SIZES

42% NYLON, 44% POLYESTER, 7% COTTON, 7% POLYURETHANE ELASTANE :MATERIAL



BLACK



NAVY



RED



MAROON



ROYAL



WHITE



PURPLE



GREEN

FLEXFIT ATHLETIC MESH

ARTICLE NO: 6777

SIZES: OSFA (ONE SIZE FITS ALL)

MATERIAL: 97% POLYESTER, 3% ELASTANE



BLACK



NAVY



WHITE



SILVER









FLEXFIT



NEW





BLACK

FINE MELANGE FLEXFIT

6277FM :ARTICLE NO

S/M L/XL :SIZES

62% POLYESTER, 35% VISCOSE, 3% ELASTANE :MATERIAL

FLEXFIT

PLAIN SPAN FLEXFIT

ARTICLE NO: 6277PS

SIZES: **S/M** **L/XL**

MATERIAL: 62% POLYESTER, 35% VISCOSE, 3% ELASTANE



HEATHER GREY





NEW



FLEXFIT



NEW





GREY

TWILL KNIT FLEXFIT

6277TK :ARTICLE NO

S/M L/XL :SIZES

66% POLYESTER, 30% COTTON, 4% ELASTANE :MATERIAL

FLEXFIT





FLEXFIT PERFORMANCE

ARTICLE NO: 6580W

SIZES: S/M L/XL

MATERIAL: 97% POLYESTER, 3% ELASTANE



BLACK/WHITE



RED/WHITE



NAVY/WHITE



ROYAL/WHITE









BLACK/WHITE



RED/WHITE



WHITE/BLACK



NAVY/WHITE

FLEXFIT PERFORMANCE

6595 :ARTICLE NO

S/M L/XL :SIZES

98% POLYESTER, 2% ELASTANE :MATERIAL

FLEXFIT

FLEXFIT GLEN CHECK

ARTICLE NO: 6196

SIZES: **S/M** **L/XL**

MATERIAL: 97% POLYESTER, 3% ELASTANE



BLACK/WHITE



BROWN/KHAKI









BLACK/GREY



BLACK/RED

FLEXFIT TARTAN PLAID

6197 :ARTICLE NO

S/M **L/XL** :SIZES

64% POLYESTER, 34% RAYON, 2% ELASTANE :MATERIAL

FLEXFIT

FLEXFIT DRIVER

ARTICLE NO: 9180

SIZES: ONE SIZE

MATERIAL: 97% POLYESTER, 3% ELASTANE



KHAKI



OLIVE



LODEN



BLACK







FLEXFIT BAMBOO

6588 :ARTICLE NO

S/M L/XL :SIZES

59% BAMBOO, 38% COTTON, 3% ELASTANE :MATERIAL

FLEXFIT



BLACK

DIAMOND QUILTED FLEXFIT

ARTICLE NO: 6277Q

SIZES: S/M L/XL

MATERIAL: 63% POLYESTER, 34% COTTON, 3% ELASTANE



BLACK







FLEXFIT DOUBLE JERSEY 2-TONE

6778T :ARTICLE NO

S/M L/XL :SIZES

63% POLYESTER, 34% COTTON, 3% ELASTANE :MATERIAL

FLEXFIT



GREY/BLACK





LEATHER IMITATION PEAK FLEXFIT

ARTICLE NO: 6277LE

SIZES: S/M L/XL

MATERIAL: 63% POLYESTER, 34% COTTON, 3% ELASTANE



BLACK









CARBON FLEXFIT

6277CA :ARTICLE NO

S/M L/XL :SIZES

63% POLYESTER, 34% COTTON, 3% ELASTANE :MATERIAL

FLEXFIT



BLACK/CARBON

HERINGBONE MELANGE FLEXFIT

ARTICLE NO: 6277HM

SIZES: S/M L/XL

MATERIAL: 80% POLYESTER, 20% VISCOSE



BLACK/H.GREY







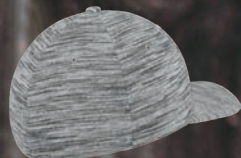
STRIPES MELANGE FLEXFIT

6277SM :ARTICLE NO

S/M L/XL :SIZES

74% POLYESTER, 22% VISCOSE, 4% ELASTANE :MATERIAL

FLEXFIT



BLACK/H.GREY



FLEXFIT DELTA

THE **DELTA** SYMBOL (Δ) IS COMMONLY USED IN SUBJECTS OF SCIENCE AND MATHEMATICS, OFTEN TO DESCRIBE **CHANGE**.

CONSTRUCTION

SEAMLESS

MATERIAL

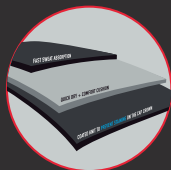
HIGH-TECH AND LIGHT
WATER RESISTANT

EYELETS

LASER CUT OR SEWN EYELETS

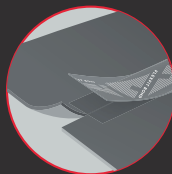
SWEATBAND

3 LAYER, HIGH-TECH CONSTRUCTION



FLEXFIT BOND TAPING

ODOR REPELLENT
THERMAL REGULATION
ANTIBACTERIAL



VISOR

LIGHTER VISOR FABRICATION
REDUCED FRONT HEAVINESS

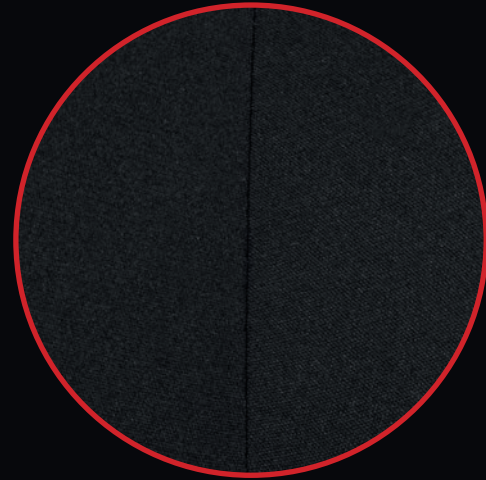
TYPICAL CAP



- HEAVY STITCHING
- CONVENTIONAL
- UNSIGHTLY



“SEAMLESS” FLEXFIT DELTA



- SEW-FREE FINISH ON ALL PANELS
- LASER CUT OR SEWN EYELETS
- HIGH-TECH, MINIMAL AND LIGHT
- WATER RESISTANT

POLYESTER/PERFORMANCE FABRIC ONLY

FLEXFIT BOND

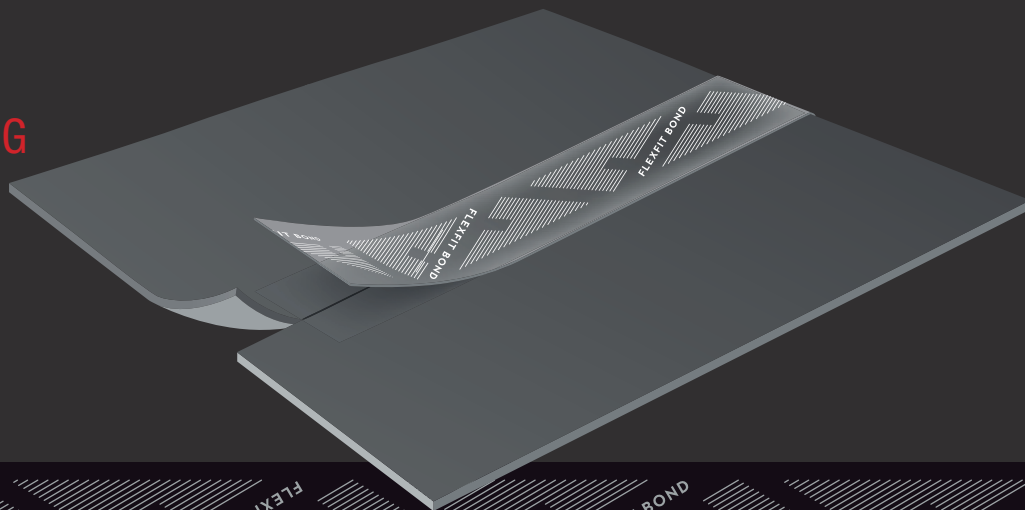


VISOR STICKER

- FINE MATTE FINISH
- MINIMAL BRANDING
- REINFORCING FLEXFIT DELTA IDENTITY

FLEXFIT BOND TAPING

- SEAM SEALED
- LIGHTWEIGHT
- REDUCED STITCHING
- ODOR REPELLENT
- THERMAL REGULATION
- ANTI-BACTERIAL



VISIT [FLEXFIT-EUROPE.COM](https://www.flexfit-europe.com) FOR MORE INFORMATION



FLEXFIT DELTA

180 :ARTICLE NO

S/M L/XL :SIZES

92% POLYESTER, 8% ELASTANE :MATERIAL

FLEXFIT



BLACK





PREMIUM 210 FITTED

ARTICLE NO: 6210

SIZES: S/M L/XL

MATERIAL: 83% ACRYLIC, 15% WOOL, 2% ELASTANE WHITE: 98% ACRYLIC, 2% ELASTANE



DARK NAVY



BLACK



DARK GREY



HEATHER



RED



BROWN



ROYAL



WHITE







PREMIUM 210 FITTED 2-TONE

6210T :ARTICLE NO

S/M L/XL :SIZES

83% ACRYLIC, 15% WOOL, 2% ELASTANE WHITE: 98% ACRYLIC, 2% ELASTANE :MATERIAL



BLACK/GREY



WHITE/BLACK



RED/BLACK



BLACK/RED

210 FITTED





CLASSIC SNAPBACK

ARTICLE NO: 6089M

SIZES: **KIDS** **OSFA** (ONE SIZE FITS ALL)

MATERIAL: 80% ACRYLIC, 20% WOOL



SILVER*



DARK GREY*



DARK NAVY



RED*



MAROON



BLACK



SPRUCE*



HEATHER



NAVY*



NATURAL*



BLACK/BLACK*



ROYAL*



PURPLE*

* COLOR NOT AVAILABLE IN KIDS







CLASSIC SNAPBACK 2-TONE

6089MT :ARTICLE NO

(ONE SIZE FITS ALL) OSFA :SIZES

80% ACRYLIC, 20% WOOL :MATERIAL



BLACK/NEONYELLOW



BLACK/SILVER



BLACK/NEONORANGE



BLACK/NEONPINK



H.GREY/MAROON



BLACK/RED



NAVY/MAROON



NATURAL/BLACK



NAVY/RED



PURPLE/GOLD



BLACK/TEAL



BLACK/PURPLE



MAROON/BLACK



H.GREY/BLACK



ROYAL/ORANGE



OLIVE/BLACK



RED/BLACK



H.GREY/NAVY
NEW



H.GREY/RED
NEW



H.GREY/ROYAL
NEW

THE CLASSICS

CLASSIC TRUCKER

ARTICLE NO: 6006W

SIZES: OSFA (ONE SIZE FITS ALL)

MATERIAL: 47% COTTON, 28% NYLON, 25% POLYESTER



BLACK/WHITE/BLACK



RED/WHITE/RED



C.BLUE/WHITE/C.BLUE



NAVY/WHITE/NAVY



KELLY/WHITE/KELLY



BROWN/WHITE/BROWN



ROYAL/WHITE/ROYAL







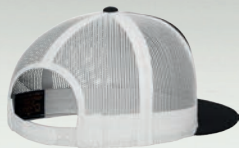
THE CLASSICS

CLASSIC TRUCKER 2-TONE

6006T :ARTICLE NO

(ONE SIZE FITS ALL) OSFA :SIZES

47% COTTON, 28% NYLON, 25% POLYESTER :MATERIAL



BLACK/WHITE

THE CLASSICS

CLASSIC TRUCKER

ARTICLE NO: 6006

SIZES: OSFA (ONE SIZE FITS ALL)

MATERIAL: 47% COTTON, 28% NYLON, 25% POLYESTER



NAVY



CHARCOAL



BLACK



WHITE







RETRO TRUCKER

6606 :ARTICLE NO

(ONE SIZE FITS ALL) OSFA :SIZES

47% COTTON, 28% NYLON, 25% POLYESTER :MATERIAL



BLACK



NAVY



KHAKI



WHITE

RETRO TRUCKER 2-TONE

ARTICLE NO: 6606T

SIZES: OSFA (ONE SIZE FITS ALL)

MATERIAL: 47% COTTON, 28% NYLON, 25% POLYESTER



BLACK/WHITE



NAVY/WHITE



BROWN/KHAKI



MOSSGREEN/KHAKI







CLASSIC 5 PANEL SNAPBACK

6007 :ARTICLE NO

(ONE SIZE FITS ALL) OSFA :SIZES

100% COTTON :MATERIAL



BLACK



WHITE



RED



NAVY



ROYAL

CLASSIC 5 PANEL SNAPBACK

ARTICLE NO: 6007T

SIZES: OSFA (ONE SIZE FITS ALL)

MATERIAL: 100% COTTON



BLACK/RED



NAVY/RED



BLACK/SILVER









CAMOUFLAGE SNAPBACK

6089CM :ARTICLE NO

(ONE SIZE FITS ALL) OSFA :SIZES

80% ACRYLIC, 20% WOOL :MATERIAL



BLACK/CAMOUFLAGE



BLACK/CAMOUFLAGE/BLACK

SPECIAL RIPSTOP SNAPBACK

ARTICLE NO: 6007RS

SIZES: OSFA (ONE SIZE FITS ALL)

MATERIAL: 100% COTTON

THE CLASSICS



HONEYCOMB/CAMO









BRUSHED COTTON TWILL MID-PROFILE

6363V :ARTICLE NO

(ONE SIZE FITS ALL) OSFA :SIZES

100% COTTON :MATERIAL



BLACK



KHAKI



NAVY



RED

CARBON SNAPBACK

ARTICLE NO: 6089CA

SIZES: OSFA (ONE SIZE FITS ALL)

MATERIAL: 80% ACRYLIC, 20% WOOL



BLACK/CARBON













FULL LEATHER IMITATION SNAPBACK

6089FL :ARTICLE NO

(ONE SIZE FITS ALL) OSFA :SIZES

100% POLYURETHANE :MATERIAL



BLACK/BLACK

THE CLASSICS

CORK SNAPBACK

ARTICLE NO: 6089C0

SIZES: OSFA (ONE SIZE FITS ALL)

MATERIAL: 80% ACRYLIC, 20% WOOL



BLACK



NATURAL









FLORAL SNAPBACK

6089F :ARTICLE NO

(ONE SIZE FITS ALL) OSFA :SIZES

80% ACRYLIC, 20% WOOL :MATERIAL



MINT



RED

ANIMAL TONE IN TONE SNAPBACK

ARTICLE NO: 6089TT

SIZES: OSFA (ONE SIZE FITS ALL)

MATERIAL: 80% ACRYLIC, 20% WOOL



BLACK/ZEBRA/BLACK



BLACK/LEOPARD/BLACK



BLACK/COBRA/BLACK









ROSES SNAPBACK

6089R :ARTICLE NO

(ONE SIZE FITS ALL) OSFA :SIZES

80% ACRYLIC, 20% WOOL :MATERIAL



BLACK/RED



BLACK/GREY

AZTEC SNAPBACK

ARTICLE NO: 6089AZ

SIZES: OSFA (ONE SIZE FITS ALL)

MATERIAL: 80% ACRYLIC, 20% WOOL



BLACK/RED



BLACK/WHITE









BLACK/BLACK



BLACK/BLUE



BLACK/FUCHSIA



BLACK/RED

BANDANA SNAPBACK

6089BD :ARTICLE NO

(ONE SIZE FITS ALL) OSFA :SIZES

80% ACRYLIC, 20% WOOL :MATERIAL

CHAMBRAY-SUEDE SNAPBACK

ARTICLE NO: 6089CH

SIZES: OSFA (ONE SIZE FITS ALL)

MATERIAL: 80% ACRYLIC, 20% WOOL



BLACK/BLACK



BLUE/BEIGE









SUN KING SNAPBACK

6089SK :ARTICLE NO

(ONE SIZE FITS ALL) OSFA :SIZES

80% ACRYLIC, 20% WOOL :MATERIAL



BLACK/WHITE

THE CLASSICS

HAWAIIAN SNAPBACK

ARTICLE NO: 6089HW

SIZES: OSFA (ONE SIZE FITS ALL)

MATERIAL: 80% ACRYLIC, 20% WOOL



BLACK/RED



BLACK/AQUA









LEATHER SNAPBACK

6089LH :ARTICLE NO

(ONE SIZE FITS ALL) OSFA :SIZES

80% ACRYLIC, 20% WOOL :MATERIAL



BLACK/BLACK



BLACK/OSTRICH

MIXED UP SNAPBACK

ARTICLE NO: 6089MX

SIZES: OSFA (ONE SIZE FITS ALL)

MATERIAL: 80% ACRYLIC, 20% WOOL



BLACK/FOREST/RED









ANIMAL SNAPBACK

6089PR :ARTICLE NO

(ONE SIZE FITS ALL) OSFA :SIZES

80% ACRYLIC, 20% WOOL :MATERIAL



BLACK/ZEBRA



BLACK/LEOPARD



BLACK/COBRA

DIAMOND QUILTED SNAPBACK

ARTICLE NO: 6089Q

SIZES: OSFA (ONE SIZE FITS ALL)

MATERIAL: 80% ACRYLIC, 20% WOOL



BLACK







BOOTS SUEDE SNAPBACK

6089BT :ARTICLE NO

(ONE SIZE FITS ALL) OSFA :SIZES

80% ACRYLIC, 20% WOOL :MATERIAL



BLACK/BEIGE



BLACK/BLACK

CHECKED FLANELL PEAK SNAPBACK

ARTICLE NO: 6089FP

SIZES: OSFA (ONE SIZE FITS ALL)

MATERIAL: 80% ACRYLIC, 20% WOOL



BLACK/RED



BLACK/WHITE



BLACK/CHARCOAL







HORUS EYE SNAPBACK

6089HE :ARTICLE NO

(ONE SIZE FITS ALL) OSFA :SIZES

100% COTTON :MATERIAL



BLACK/WHITE

THE CLASSICS

MELANGE 2-TONE SNAPBACK

ARTICLE NO: 6089ML

SIZES: OSFA (ONE SIZE FITS ALL)

MATERIAL: 100% POLYESTER



RED/BLACK









GEOMETRIC VISOR SNAPBACK

ARTICLE NO: 6089GV

SIZES: OSFA (ONE SIZE FITS ALL)

MATERIAL: 80% ACRYLIC, 20% WOOL



BLACK/WHITE





THE CLASSICS

NEW



NEW



FALLEN LINES SNAPBACK

6089LI :ARTICLE NO

(ONE SIZE FITS ALL) OSFA :SIZES

100% COTTON :MATERIAL



BLACK/BLACK/GREY

THE CLASSICS

MESH VISOR SNAPBACK

ARTICLE NO: 6089MV

SIZES: OSFA (ONE SIZE FITS ALL)

MATERIAL: 80% ACRYLIC, 20% WOOL



BLACK/BLACK





THE CLASSICS

NEW



THE CLASSICS

NEW



PAINTED VISOR SNAPBACK

6089PV :ARTICLE NO

(ONE SIZE FITS ALL) OSFA :SIZES

80% ACRYLIC, 20% WOOL :MATERIAL



BLACK/WHITE

REFLECTIVE VISOR SNAPBACK

ARTICLE NO: 6089RV

SIZES: OSFA (ONE SIZE FITS ALL)

MATERIAL: 80% ACRYLIC, 20% WOOL



BLACK/LIGHTGREY





THE CLASSICS

NEW



NEW



STRIPES MELANGE CROWN SNAPBACK

6089SC :ARTICLE NO

(ONE SIZE FITS ALL) OSFA :SIZES

74% POLYESTER, 22% VISCOSE, 4% ELASTANE :MATERIAL



BLACK/GREY

SUNSET PEAK SNAPBACK

ARTICLE NO: 6089SP

SIZES: OSFA (ONE SIZE FITS ALL)

MATERIAL: 80% ACRYLIC, 20% WOOL



BLACK





THE CLASSICS

NEW



THE CLASSICS

NEW





STRIPES MELANGE VISOR SNAPBACK

6089SV :ARTICLE NO

(ONE SIZE FITS ALL) OSFA :SIZES

80% ACRYLIC, 20% WOOL :MATERIAL



BLACK/GREY

THE CLASSICS

MELTON WOOL SNAPBACK

ARTICLE NO: 6689M

SIZES: OSFA (ONE SIZE FITS ALL)

MATERIAL: 80% ACRYLIC, 20% WOOL



BLACK



DARKGREY



HEATHER GREY



NAVY



WHITE





THE CLASSICS

NEW









OIL PAINT SNAPBACK

60890P :ARTICLE NO

(ONE SIZE FITS ALL) OSFA :SIZES

80% ACRYLIC, 20% WOOL :MATERIAL



BLACK/MULTICOLOR



BLACK/H.GREY

CHECKED FLANEL SNAPBACK

ARTICLE NO: 6089RC

SIZES: OSFA (ONE SIZE FITS ALL)

MATERIAL: 100% COTTON



BLACK/RED



BLACK/WHITE



BLACK/CHARCOAL







LOW PROFILE COTTON TWILL

6245CM :ARTICLE NO

(ONE SIZE FITS ALL) OSFA :SIZES

100% COTTON :MATERIAL



BLACK



NAVY



WHITE



KHAKI

FOAM TRUCKER

ARTICLE NO: 6005FF

SIZES: OSFA (ONE SIZE FITS ALL)

MATERIAL: 60% COTTON, 40% POLYESTER



BLACK



NAVY



RED



ROYAL



WHITE









FOAM TRUCKER WITH WHITE FRONT

6005FW :ARTICLE NO

(ONE SIZE FITS ALL) OSFA :SIZES

60% COTTON, 40% POLYESTER :MATERIAL



BLACK/WHITE/BLACK



BLACK/WHITE/RED



NAVY/WHITE/NAVY



RED/WHITE/BLACK



RED/WHITE/RED



ROYAL/WHITE/ROYAL







ONE TEN

NEW





BLACK



NAVY



RED



ROYAL



WHITE

110 VISOR

8110 :ARTICLE NO

(ONE SIZE FITS ALL) OSFA :SIZES

83% ACRYLIC, 15% WOOL, 2% POLYURETHANE ELASTANE :MATERIAL

110 FITTED SNAPBACK

ARTICLE NO: 110

SIZES: OSFA (ONE SIZE FITS ALL)

MATERIAL: 83% ACRYLIC, 15% WOOL, 2% POLYURETHANE ELASTANE



RED



RED/BLACK



BLACK/RED



BLACK



BLACK/GREY



DARKGREY



WHITE



WHITE/BLACK







ACID EFFECT 110 SNAPBACK

110AE :ARTICLE NO

(ONE SIZE FITS ALL) OSFA :SIZES

83% ACRYLIC, 15% WOOL, 2% POLYURETHANE ELASTANE :MATERIAL



DARKBLUE

HERINGBONE 110 SNAPBACK

ARTICLE NO: 110HB

SIZES: OSFA (ONE SIZE FITS ALL)

MATERIAL: 65% POLYESTER, 32% VISCOSE, 3% ELASTANE



GREY/RED



GREY/BLACK







110 COOL & DRY MINI PIQUE

110P :ARTICLE NO

(ONE SIZE FITS ALL) OSFA :SIZES

100% POLYESTER :MATERIAL



BLACK



NAVY



RED



ROYAL



WHITE



SILVER





CLASSIC JOCKEY CAP

ARTICLE NO: 7005

SIZES: OSFA (ONE SIZE FITS ALL)

MATERIAL: 100% COTTON



OLIVE



KHAKI



BLACK



DARKGREY



CAMO



NAVY



RED







ROSES JOCKEY CAP

7005R :ARTICLE NO

(ONE SIZE FITS ALL) OSFA :SIZES

100% POLYESTER :MATERIAL



BLACK/RED





FLEXFIT COTTON TWILL BUCKET HAT

ARTICLE NO: 5003

SIZES: OSFA (ONE SIZE FITS ALL)

MATERIAL: 98% COTTON, 2% ELASTANE



BLACK



KHAKI



GREY



NAVY



RED



WHITE







BUCKET HAT

BANDANA LEATHER IMITATION BRIM BUCKET HAT

5003BL :ARTICLE NO

(ONE SIZE FITS ALL) OSFA :SIZES

100% COTTON :MATERIAL



BLACK

FULL LEATHER IMITATION BUCKET HAT

ARTICLE NO: 5003FL

SIZES: OSFA (ONE SIZE FITS ALL)

MATERIAL: 100% POLYURETHANE LEATHER



BLACK







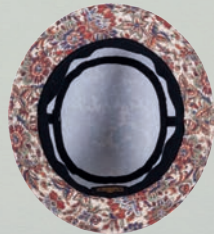
BUCKET HAT

FLOWER PATTERN BUCKET HAT

5003FP :ARTICLE NO

(ONE SIZE FITS ALL) OSFA :SIZES

100% POLYESTER :MATERIAL



BEIGE

ROSES BUCKET HAT

ARTICLE NO: 5003R

SIZES: OSFA (ONE SIZE FITS ALL)

MATERIAL: 100% POLYESTER



BLACK/RED



BLACK/WHITE







SUN KING BUCKET HAT

5003SK :ARTICLE NO

(ONE SIZE FITS ALL) OSFA :SIZES

100% POLYESTER :MATERIAL



BLACK/WHITE



HEAVYWEIGHT BEANIE

ARTICLE NO: 1500KC

SIZES: OSFA (ONE SIZE FITS ALL)

MATERIAL: 100% HYPOALLERGENIC ACRYLIC



RED



MAROON



NAVY



BLACK



CL. BLUE



BABY PINK



SPRUCE



BLAZE ORANGE



ROYAL



BROWN



OLIVE



PURPLE



GOLD



CHARCOAL



HEATHER GREY



WHITE





HEAVYWEIGHT LONG BEANIE

1501KC :ARTICLE NO

(ONE SIZE FITS ALL) OSFA :SIZES

100% HYPOALLERGENIC ACRYLIC :MATERIAL



RED



MAROON



NAVY



BLACK



CL. BLUE



BABY PINK



SPRUCE



BLAZE ORANGE



ROYAL



BROWN



OLIVE



PURPLE



GOLD



CHARCOAL



HEATHER GREY



WHITE









FLEXFIT[®]
 **YUPOONG**